



Social Dialogue for Social Services

Federation of European
Social Employers

Handelsstraat/Rue du Commerce 72
1040 Brussel/Bruxelles
+32(0) 2 233 77 20
België/Belgique



With financial support from the
European Union

European Social Economy Congress
San Sebastian, November 14, 2023



Reminders

Visibility and influence

According to EU treaties, for any initiative in the Social field, the Commission;

- **Can** consult civil society organisations
- **Must** consult social partners

Content

Social dialogue = better working conditions=better quality support to vulnerable groups



Key steps

2012 PESSIS projects led by EU social NGOs,
esp. members of SSE + EPSU: mapping of
existing structures and capacity building

2017, creation of the Federation of Social
Employers



Since 2017...

Projects on capacity building, attractiveness, evolution of jobs and skills, working conditions...

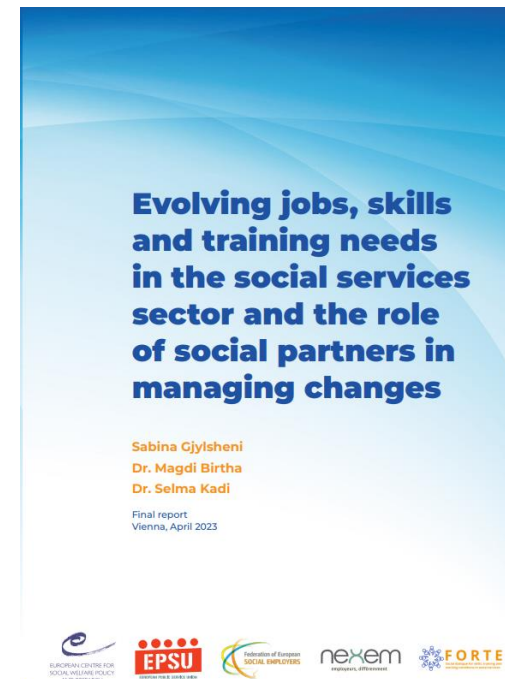
- DialogueS
- [Foresse](#)
- [Forte](#)
- and [IworCon](#)



Federation of European Social Employers



 **FORESEE**
social services
Handelsstraat/Rue du Commerce 72
1040 Brussel/Bruxelles
+32(0) 2 233 77 20
België/Belgique



With financial support from the European Union



Also many joint positions / Statements

2023

European Care Strategy: Member States must act now! [EN](#)

2022

The situation in Ukraine. [EN](#).

European Care Strategy: strong social dialogue in social services needed. [EN](#),

2021

The forthcoming European Care Strategy. [EN](#),

The importance of developing social dialogue in the Social Economy. [EN](#).

2020

Preparing the social services sector for the COVID-19 resurgence and increasing its resilience. [EN](#)

The Covid-19 Outbreak and Impact on Social Services. [EN](#),

Recruitment and retention in European Social Services. [EN](#)

2019

Digitalisation in the social services sector. [EN](#)



European Care Strategy: Member States must act now!
Joint statement by the Federation of European Social Employers
and the European Federation of Public Services Unions

18/01/2023





July 2023 Creation of the 44th EU Sectoral Social Dialogue Committee

Federation of European
Social Employers

Handelsstraat/Rue du Commerce 72
1040 Brussel/Bruxelles
+32(0) 2 233 77 20
België/Belgique



With financial support from the
European Union

European Social Economy Congress
San Sebastian, November 14, 2023



Scope

NACE codes:

- 87 Residential care activities
- 88 Social work activities without accommodation

Service Providers mostly part of the Social Economy

+ 9 million workers in the EU

82% are women

Who will take part in the Committee ?

- Employers: Social Employers + CEMR
- Employees: EPSU (with a participation of UNI and CESI)



What will it be about ?

A draft work programme for 3 years with 4 key topics (Tbc)

1. Retain and Attract social services' workers (diversity - job evolution - working conditions)
2. Capacity building (support national social partners and social dialogue)
3. Public procurement
4. European Care Strategy follow-up



Which outcomes ?

Categories of texts and outcomes of European sectoral social dialogue		
Category of texts	Sub-categories	Follow-up measures
Agreements	Implementation by directives Implementation by social partners (Article 155)	Implementation reports
Process-oriented texts	Framework of actions, guidelines, codes of conduct, policy orientations	Follow-up reports
Joint opinions and tools	Declarations, guides, handbooks, websites, tools	No follow-up clauses Promotional activities



Thank you for your attention!

For more information on the



www.socialemployers.eu

 @SocialEmployers

sylvain.renouvel@socialemployers.eu

Federation of European
Social Employers

Handelsstraat/Rue du Commerce 72
1040 Brussel/Bruxelles
+32(0) 2 233 77 20
België/Belgique



Co-funded by the Support for Social dialogue
Programme of the European Union